



Case Study

DECEMBER 2010

Triton supplied:

Platon Double Drain, Triton TT Super



TRITON PRODUCTS REPLACE FAILED SYSTEM

Triton TT Super barrier coating and Platon Double Drain membrane were used as part of an ingenious design to replace an existing waterproofing system which had failed.

Designed by Cork based Triton Conservation Systems, the system was installed at a new residential property after a water bar detail had failed at the floor/wall junction and the mass concrete walls at basement level were also weeping due to failure of the waterproof concrete.



Areas of collapse prior to commencement

The works were essential as the site had become unsafe and the back filling around the property was collapsing and being washed away underground through an old river bed. The rainwater collection tank was also leaking as the ground had collapsed underneath it and opened up all the pipe work.

Triton Conservation Systems designed a system to let water flow around the property. This was set to falls to a series of holding tanks which were built to back fill so a pumping system could be installed which, due to the high volume of water, would discharge for approximately two hours each day – rather than running continuously.

The exposed wall areas below ground were stripped back to the original mass concrete and pressure cleaned. They were then coated with three coats of TT Super before the installation of Double Drain Membrane.

TT Super is a surface applied system which waterproofs and protects concrete in depth. It is supplied as a powder which only needs mixing with water before application. When applied to a concrete surface, the active chemicals combine with the free lime and moisture present in the capillary track to form insoluble crystals which block capillaries and minor shrinkage cracks to prevent any further water ingress (even under pressure).

Platon Double Drain is a cavity drain membrane designed for external use to protect underlying waterproofing from backfill damage. Its filter fabric layer ensures soil cannot enter membrane cavities to impede drainage.

Double Drain is installed with the filter fabric facing the backfill. It is fixed mechanically along its top edge using Platon-Cramp, which provides tear resistant fixing points.

Triton Conservation Systems excavated around the entire property below the raft foundation so as to drop the water table and remove around 900 tons of material before replacing with a safe back filling designed to compact properly.

Triton Conservation Systems

Tel: 00 353 214 504 201

www.triton-conservationsystems.com

Triton Chemical Manufacturing Co. Ltd.

Unit 5, Lyndean Industrial Estate, Abbey Wood, London SE2 9SG

Tel: 020 8310 3929

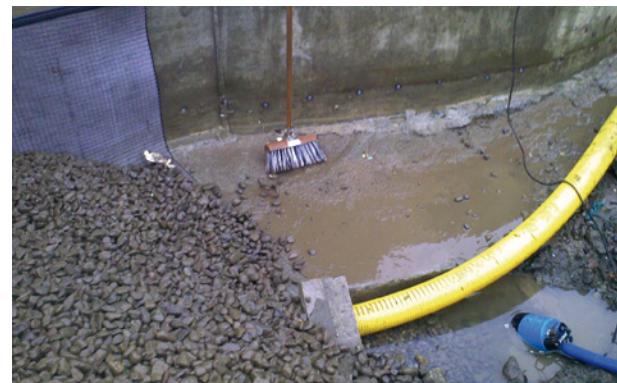
Fax: 020 8312 0349

Email: info@triton-chemicals.com

www.triton-chemicals.com



Excavation works in progress



Installation of Platon Double Drain



New back filling



Works completed and property landscaped