



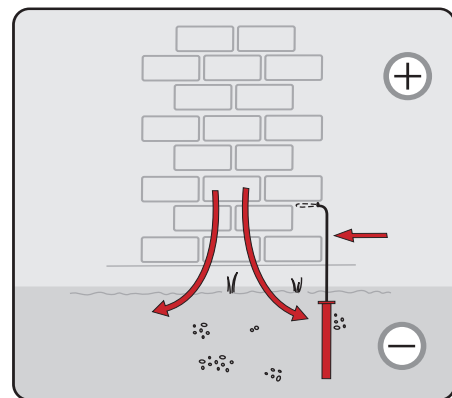
*Trimotic
Electro-Osmotic
Damp Proofing System*



Trimotic is a chemical-free damp proofing system that utilises the principle of Electro-Osmosis. Electro-Osmosis occurs when an electrical potential is applied across a damp porous material which causes a force to be exerted on the water which then moves towards the cathode (earth).

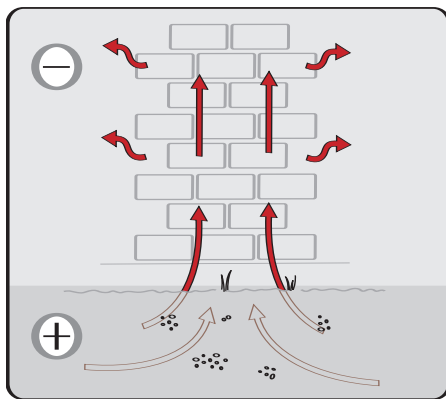
KEY BENEFITS

- Chemical free
- Suitable for virtually any type of wall
- Eligible for insurance backed guarantees
- Minimal running costs

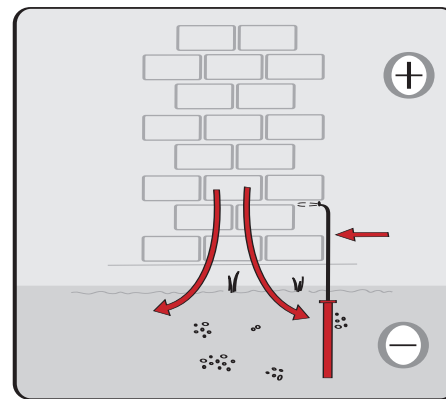


ELECTRO-OSMOTIC SYSTEM INSTALLED

Trimotic Electro-Osmotic Damp Proofing System



WALL WITHOUT PROTECTION



ELECTRO-OSMOTIC SYSTEM INSTALLED

The Trimotic system involves inserting platinum coated titanium wire anodes into the wall at regular intervals. These anodes (which are joined together by plain titanium wire) are placed around the building in a ring main-like configuration. One end is connected to a low voltage power supply and the circuit is completed at the other end by an earthing rod (cathode) driven into the ground to a level below that of the anodes and at a

distance of at least two metres away from the nearest anode. The completed and operational system then provides the electric potential, which stops the rising damp and allows the wall to dry out. Removal and replacement of salt contaminated or damaged internal plastering is carried out as usual and to the normal specifications used when replastering after the insertion of a chemical damp proof course.

THE THREE KEY COMPONENTS OF THE TRIMOTIC ELECTRO-OSMOTIC SYSTEM

Power unit

The simple and robust power unit plugs into a 13 amp socket. The plug connected to the unit's output lead simply fits into a socket fitted to the titanium wire of the installed system. Power delivery from the unit adjusts automatically to the degree of dampness in the wall thus ensuring the best possible results.

Anodes

The anodes are supplied spliced into pure titanium wire. Each anode consists of a titanium wire substrate coated with platinum. The platinum is very resistant to oxidation and is used to ensure excellent long term electrical conductivity into the wall.

Earthing Rods

The earthing rods complete the circuit. The electrical potential created by the power unit is between the anodes and earthing rod(s), therefore it is important to achieve a good earth contact.

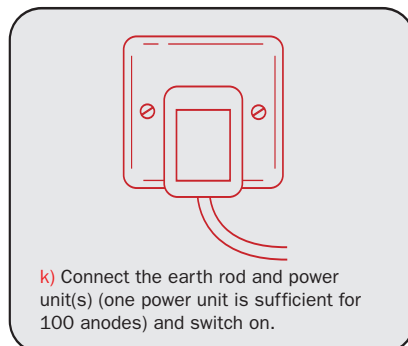
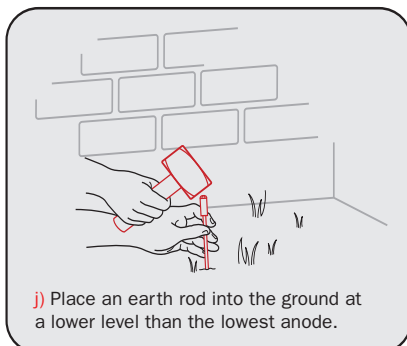
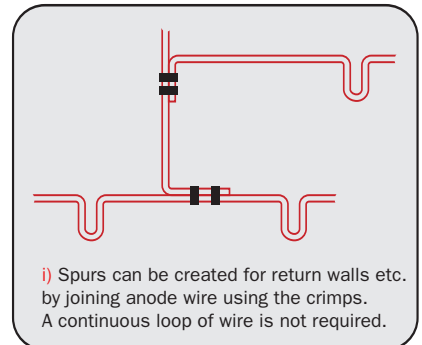
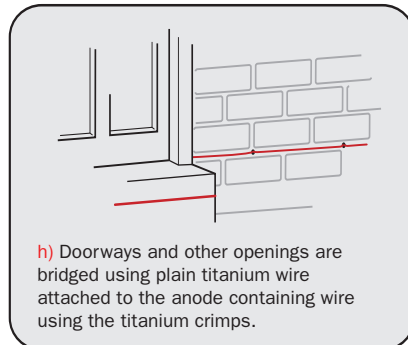
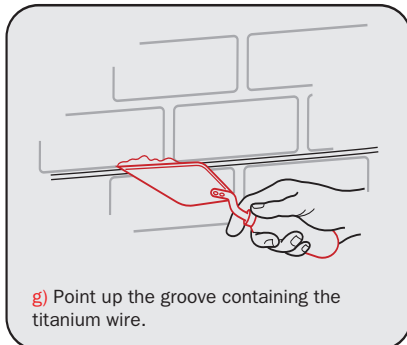
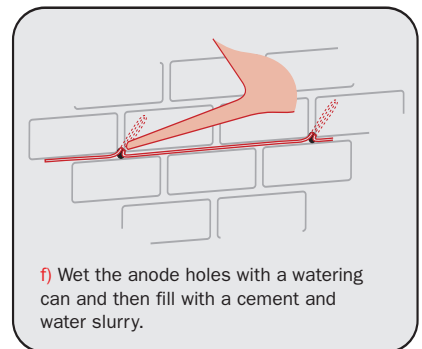
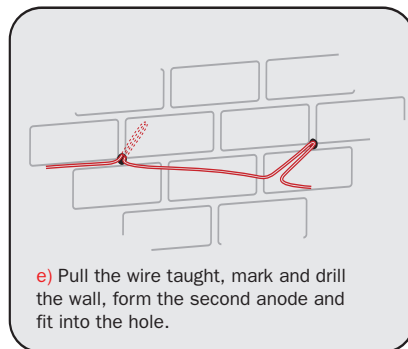
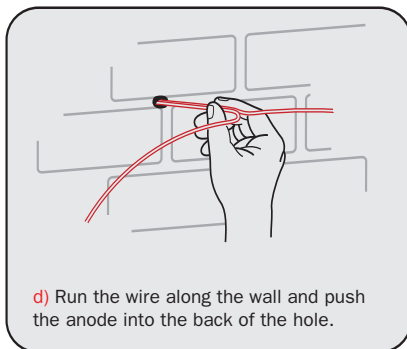
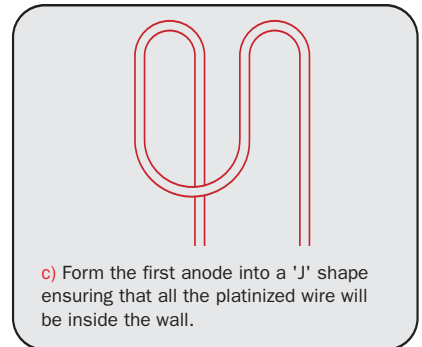
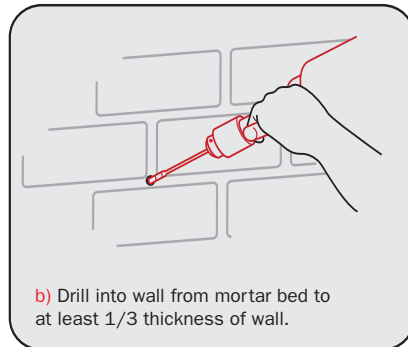
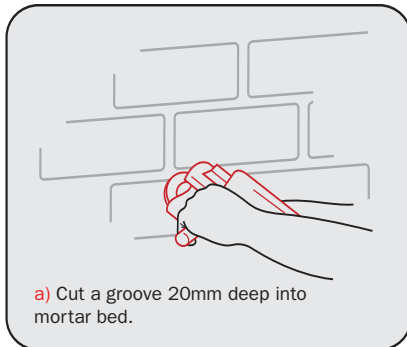
PRINCIPLES OF INSTALLATION

1) Before a Trimotic Electro-Osmotic system can be considered a full survey of the property should be carried out. Floor levels inside and out, wall construction type(s), floor construction etc., should be determined alongside the diagnosis of dampness itself. Once rising damp has been correctly diagnosed attention can be turned to the practical considerations of where power units and earth rods can be positioned and what the best route for the installation of the anodes might be.

2) Installation of the anodes can be from the outside or the inside of the building, in either case the internal rendering will almost certainly need to be removed due to salt contamination. If not, at the very least skirting boards will need to be removed to allow access to the base of the wall when internal installation is carried out.

3) The anodes are inserted into the wall via holes drilled from a mortar bed down at an angle (varying from 10° to 30°) The titanium wire between the anodes is placed into a 20mm chase or groove cut into the mortar bed.

The process typically proceeds as follows:



The titanium wire should be considered to be live (although at a very low, safe voltage as far as people and animals are concerned) and should not come into contact with any other metal such as central heating pipes, electrical boxes or wiring etc.

Insulating sleeving or tape should be used to isolate vulnerable wire.

Warning labels are supplied for attachment to the wire for display in prominent places.



Triton Chemical Manufacturing Co. Ltd.

Unit 5, Lydean Industrial Estate, Abbeywood, London SE2 9SG

Tel: 020 8310 3929 Fax: 020 8312 0349 Email: info@triton-chemicals.com

www.triton-chemicals.com