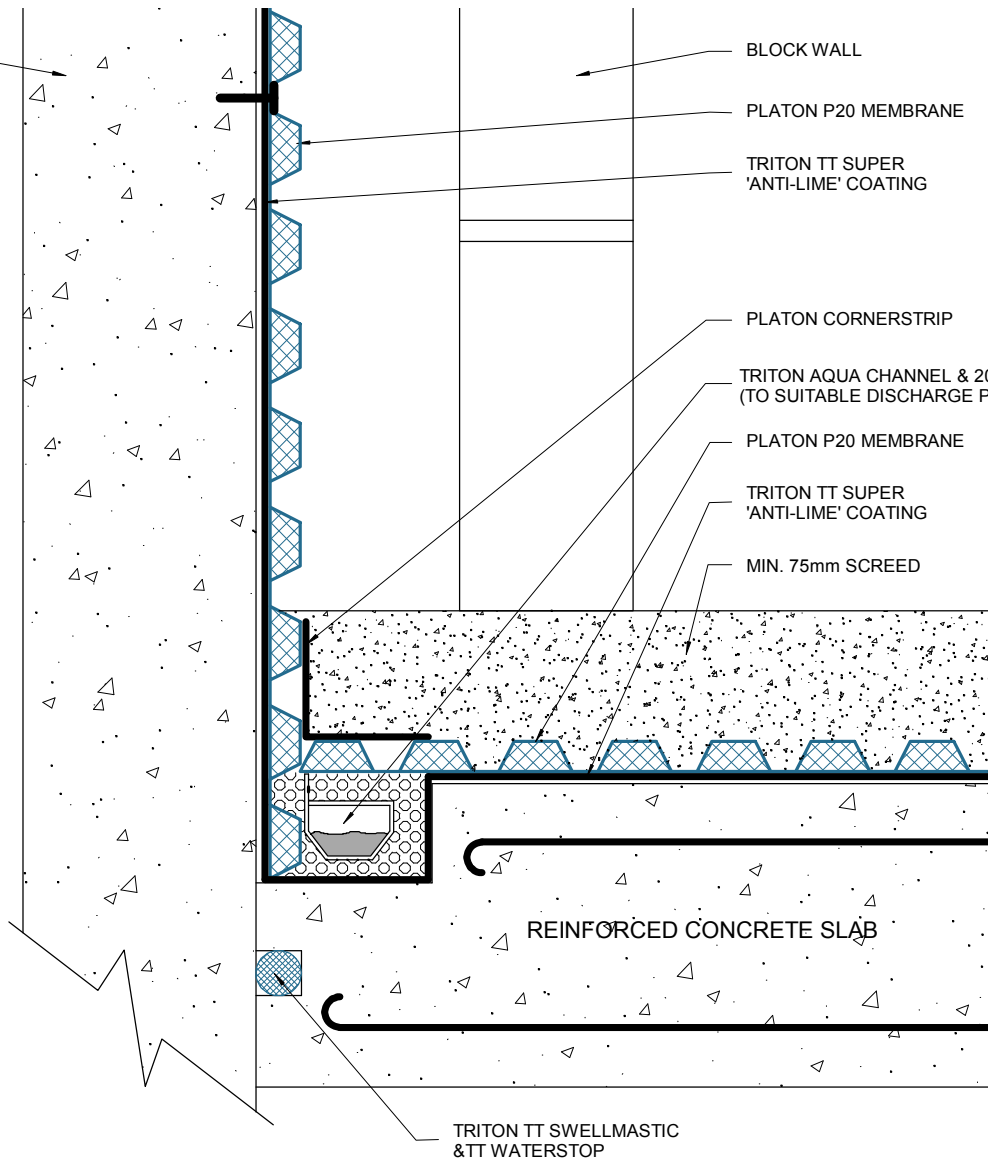


SECANT PILED
CONCRETE WALL



BLOCK WALL

PLATON P20 MEMBRANE

TRITON TT SUPER
'ANTI-LIME' COATING

PLATON CORNERSTRIP

TRITON AQUA CHANNEL & 20mm STONES
(TO SUITABLE DISCHARGE POINT)

PLATON P20 MEMBRANE

TRITON TT SUPER
'ANTI-LIME' COATING

MIN. 75mm SCREED

REINFORCED CONCRETE SLAB

TRITON TT SWELLMASTIC
& TT WATERSTOP

PLEASE NOTE:
FOR CONTIGUOUS PILED WALLS CONTACT
TRITON TECHNICAL DEPARTMENT



www.tritonsystems.co.uk

Triton Systems

Units 3 - 5 Crayford Commercial Centre
Greyhound Way, Crayford, Kent. DA1 4HF

Telephone: **01322 318830**

Fax: **01322 524017**

Email: info@tritonsystems.co.uk

Web: www.tritonsystems.co.uk

THIS DRAWING IS THE PROPERTY OF TRITON SYSTEMS AND MUST NOT
BE LOANED OR COPIED WITHOUT PRIOR WRITTEN CONSENT
© 2011 TRITON SYSTEMS

NOTE

ALL INSTALLATION TO BE CARRIED OUT IN STRICT ACCORDANCE WITH
MANUFACTURERS INSTALLATION INSTRUCTIONS. FOR FURTHER
ASSISTANCE CONTACT **TRITON TECHNICAL** ON THE TELEPHONE
NUMBER ABOVE.

REV.	MOD. BY	DATE	CHK. BY	APP. BY

Alterations

TITLE:

Platon P20 Membrane
To Piled Walls

DRG. No. IP 030.1 **REV** 2

DRAWN	JDF, CBS	System Files:
DATE	23rd April 2008	
SCALE (A3)	Not To Scale	IP030-1(2).pdf IP030-1(2).dwg
CHECKED		
APPROVED		