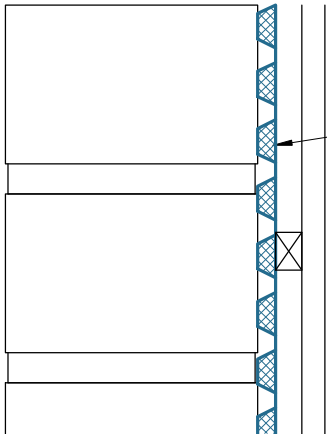


NOTE

ALL INSTALLATION TO BE CARRIED OUT IN STRICT ACCORDANCE WITH MANUFACTURERS INSTALLATION INSTRUCTIONS. FOR FURTHER ASSISTANCE CONTACT **TRITON TECHNICAL** ON THE TELEPHONE NUMBER ABOVE.

REV.	MOD. BY	DATE	CHK. BY	APP. BY
Alterations				
TITLE:				
Platon Membrane & Aqua Channel With Triseal Epoxy Floor Finish				
DRG. No.				REV
IP 012.1				2
DRAWN	JDF, CBS		System Files: IP012-1(2).pdf IP012-1(2).dwg	
DATE	20th October 2006			
SCALE (A3)	Not To Scale			
CHECKED				
APPROVED				



PLATON MULTI/P5 MEMBRANE

DRY LINING WITH FOILBACK
PLASTERBOARD



www.tritonsystems.co.uk

Triton Systems

*Units 3 - 5 Crayford Commercial Centre
Greyhound Way, Crayford, Kent. DA1 4HF*

*Telephone: **01322 318830***

*Fax: **01322 524017***

Email: info@tritonsystems.co.uk

Web: www.tritonsystems.co.uk