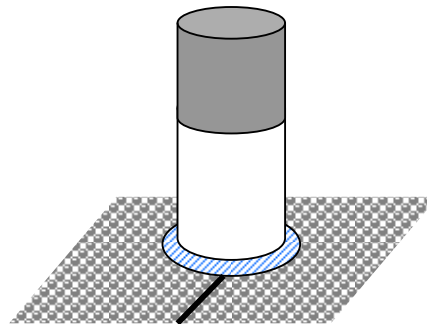


Vertical service entry through floor detail

Drawing No. (IP 028.1)

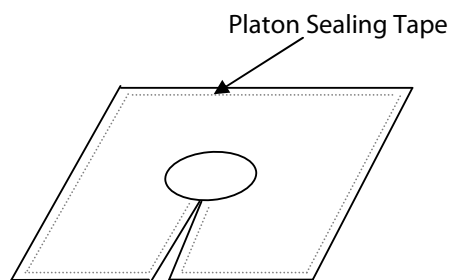
Stage 4

Lay Platon Floor membrane cutting the membrane around the profile of the service entry and wrap another rope seal at the base between the floor membrane and vertical section of Wall/floor junction.



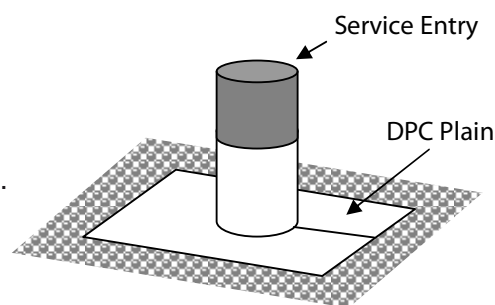
Stage 5

Cut a 300mm (min) square piece of Platon DPC plain and cut out a hole the size of the service entry. Using scissors cut from one edge of the DPC Plain to the centre hole. Apply Platon Sealing Tape around all edges including the cut section.



Stage 6

Fir Platon DPC Plain around service entry and seal to floor membrane by pressing down on sealing tape.



© Triton Chemical Manufacturing Company Limited

All installations to be strictly in accordance with manufacturer's guidelines which are set out in the Isola Manual. For any non-standard details, please contact our technical department on 020 8310 3929



Triton Chemical Manufacturing Co. Ltd.

Triton House, Lyndean Industrial Estate,

129 Felixstowe Road, Abbeywood, London SE2 9SG

Tel: 020 8310 3929 Fax: 020 8312 0349 Email: info@triton-chemicals.com

www.triton-chemicals.com