



**Chemical Manufacturing Co. Ltd.**

Unit 5, Lydean Industrial Estate  
Abbeywood, London. SE2 9SG

Telephone: 020 8310 3929

Fax: 020 8312 0349

Email: [info@triton-chemicals.com](mailto:info@triton-chemicals.com)

Web: [www.triton-chemicals.com](http://www.triton-chemicals.com)

THIS DRAWING IS THE PROPERTY OF TRITON CHEMICAL MANUFACTURING AND MUST NOT BE LOANED OR COPIED WITHOUT PRIOR WRITTEN CONSENT  
© 2007 TRITON CHEMICAL MANUFACTURING CO. LTD.

**NOTE**

ALL INSTALLATION TO BE CARRIED OUT IN STRICT ACCORDANCE WITH MANUFACTURERS INSTALLATION INSTRUCTIONS. FOR FURTHER ASSISTANCE CONTACT **TRITON TECHNICAL** ON THE TELEPHONE NUMBER ABOVE.

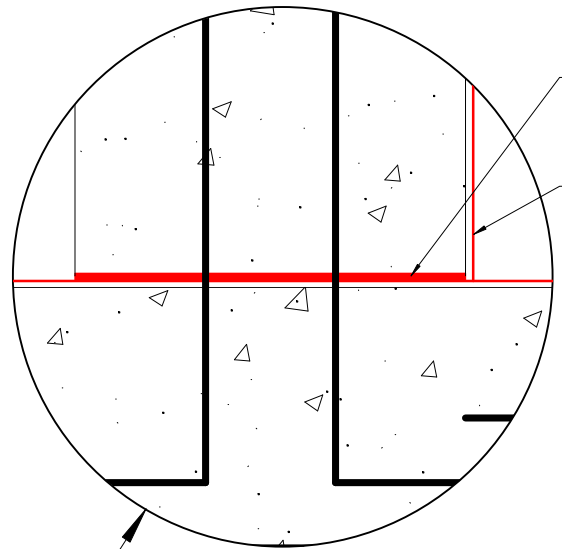
REV.	MOD. BY	DATE	CHK. BY	APP. BY

**Alterations**

**TITLE:** Concrete Waterproofing  
New Construction  
Using  
Triton TT Super/Super White

<b>DRG. No.</b> TT 006.1	<b>REV</b> 1
--------------------------	-----------------

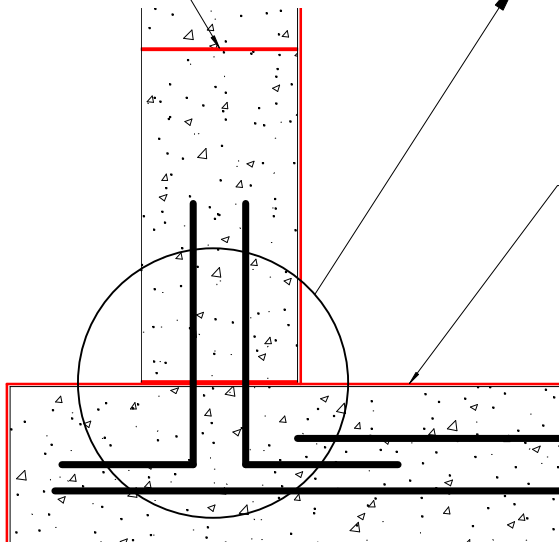
DRAWN	JDF, CBS	System Files: TT 006-1(1).pdf
DATE	25-06-07	
SCALE (A3)	Not To Scale	
CHECKED		
APPROVED		



Triton TT Super  
@ 1.5Kg/M<sup>2</sup>

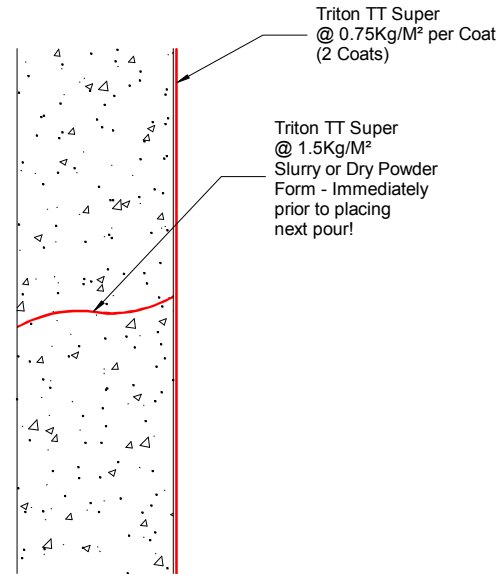
Triton TT Super  
@ 0.75Kg/M<sup>2</sup> per Coat  
(2 Coats)

Triton TT Super  
@ 1.5Kg/M<sup>2</sup>



Triton TT Super  
@ 1.0Kg/M<sup>2</sup>  
(1 Coat)

New Construction



Triton TT Super  
@ 0.75Kg/M<sup>2</sup> per Coat  
(2 Coats)

Triton TT Super  
@ 1.5Kg/M<sup>2</sup>  
Slurry or Dry Powder  
Form - Immediately  
prior to placing  
next pour!

Construction Joint