



# TRITON FILLET SEAL

A pre-packed cement based and polymer modified product for use as a floor to wall junction seal during waterproofing works when using cementitious slurry coatings (T.T.55) and renders. In most circumstances FILLET SEAL need only be mixed with water for use. Where extra adhesion or flexibility are required, TRITON SBR latex and TRITON TANKING MIX ELASTIFIER (T.T.M.E) may be used respectively.

**NOTE:** Where water is leaking or seeping the use of TRITON QUICK SET is advised.

The use of FILLET SEAL helps to ensure a smooth transition between horizontal and vertical surfaces which minimises the risk of leaving gaps or holes unsealed during the water proofing works.

## **PREPARATION**

Situations where the FILLET SEAL will be employed should already have been prepared in accordance with the slurry coating or render specification. In the majority of instances the FILLET SEAL will be applied onto the slurry coated surface as illustrated in FIG. 1 below.

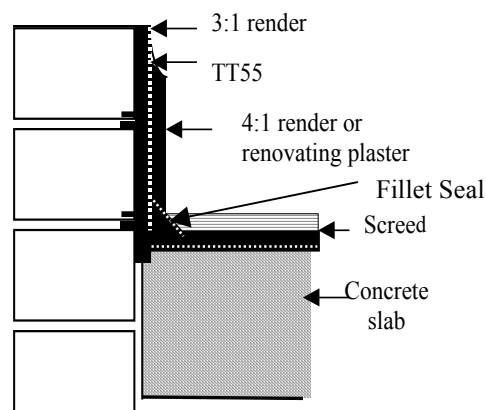


Fig. 1

The FILLET SEAL becomes fully encapsulated within the layers of slurry coating.

## **USAGE**

FILLET SEAL normally needs only mixing with clean water before use. Add sufficient water to make a cohesive, stiff mortar. Ideally the FILLET SEAL should be applied to partly cured (green) slurry coating (T.T.55) surfaces to maximise adhesion. If this is not possible make up the FILLET SEAL using a gauging solution composed of 1 part TRITON SBR to 4 parts water (by volume). Pre-wet the surface with the same solution just before applying the FILLET SEAL. When excessive stress concentrations are expected at floor/wall joints the use of T.T.M.E added to the mix is advised. T.T.M.E increases flexibility and should be added neat to FILLET SEAL until the required consistency is achieved. The slurry coating (T.T.55) under and overcoats should also contain T.T.M.E.

**NOTE:** Only sound substrates suitable to be permanently sealed under a waterproofing system should be treated. Concrete, Brick, Stone, Render and Mortar in poor condition could deteriorate further when sealed inappropriately.

## **CURING**

Avoid rapid drying out, overcoat as soon as set (5-6 hours dependent on conditions) whenever possible. Do not subject to running water until fully hardened (and overcoated).

## **STORAGE AND HANDLING**

Avoid breathing dust.

Wear gloves and eye protection.

Wash hands and exposed skin after use.

Must be stored in dry frost-free conditions.

If bags are stored correctly and unopened they will have shelf life of 12 months.

Packed in 25kg bags.

Minimum application temperature: 5°C

Maximum application temperature: 30°C

## **COVERAGE**

15 – 20Lm (25mm x 25mm triangular fillet) per 25kg approximately.

The information given in this data sheet is given in good faith and is based upon knowledge and experience of the materials used. However, since the application of the product is beyond the control of Triton Chemical Manufacturing Company, the Company cannot accept responsibility for any loss or damage resulting from the use of the product outside the scope of the intended use and precautions set out in the data sheet.

*For further information contact:*

**Triton Chemical Manufacturing Co. Ltd.**

Unit 5, Lydean Industrial Estate,

129 Felixstowe Rd, Abbey Wood, London, SE2 9SG

Telephone: 020 8310-3929 Fax: 020 8312-0349

[www.triton-chemicals.com](http://www.triton-chemicals.com)

[info@triton-chemicals.com](mailto:info@triton-chemicals.com)

Ref: 09/02 DATA TRITON FILLET SEAL